



Gartree High School

Year 10 Cambridge National in Health & Social Care (OCR) – Curriculum Map



LO2 – Person-centred Values

- 2.1 Person-centred values and how they are applied
- 2.2 Benefits of applying the person-centred values
- 2.3 Effects on health and well-being if person-centred values are not applied

Benefits



← Progress onto Year 11



LO3 – Sources of Support That Meets Individuals Needs

- Sources of support
- The roles of practitioners in providing support
- The roles of informal care givers in providing support
- How practitioners meet individual needs
- Research and recommend personalised support



RO33 – Supporting Individuals Through Life Events

Coursework is due in and moderated.

RO32 – Principles of Care in Health & Social Care Settings

Exam – You will begin to learn the 4 topic areas for the exam unit of the course



Summer Term

LO2 – Life Events and Their Impacts on Individuals

- Expected and unexpected life events
- Impacts that life events have on individuals
- Identifying individual's needs based on the impacts

LO1 – The Rights of Service Users in H&SC Settings

- 1.1 Types of care settings
- 1.2 The rights of service users
- 1.3 The benefits to service user's health and well-being when rights are maintained



Spring Term

RO33 – Supporting Individuals Through Life Events

Coursework – You will learn about the growth and development through the life stages.

LO1 – Life Stages and Development

- Life stages and key milestones
- PIES development
- Factors affecting growth and development
- How growth and development is affected



Year 10

Autumn Term

Introduction to Health and Social Care

What is CNAT H&SC? Expectations of the Course.



Coursework

shutterstock.com - 1128011301



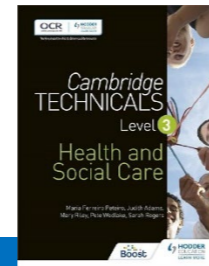
Your CNAT H&SC Journey starts here...



Gartree High School

Year 11 Cambridge National in Health & Social Care (OCR) – Curriculum Map

Your new journey begins...



A-LEVELS



RO32 – Principles of Care in a Health and Social Care Setting

Sit Health and Social Care exam!!

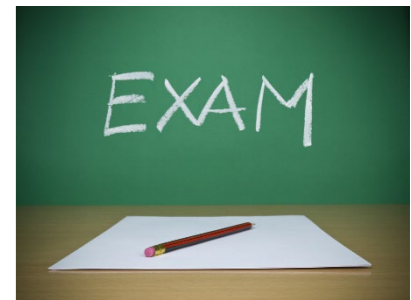
LO4 – Deliver and Evaluate a Health Promotion Campaign

- 4.1 How to deliver a health promotion campaign
- 4.2 How to evaluate own performance



RO33 – Supporting Individuals Through Life Events

Coursework is due in and moderated.



Summer Term



LO4 – Protecting Service Users and Providers in Health and Social Care Settings

- 4.1 Safeguarding
- 4.2 Infection prevention
- 4.3 Safety procedures and measures

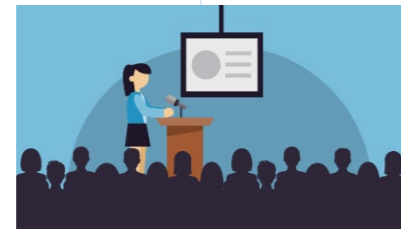
LO3 – Plan and Create a Health Promotion Campaign

- 3.1 How to plan a health promotion campaign



RO32 – Principles of Care in Health & Social Care Settings

Revise and revisit the exam content ready for the exam in the summer term.



Spring Term

LO3 – Effective Communication in Health and Social Care Settings

- 3.1 The importance of verbal communication
- 3.2 The importance of non-verbal communication
- 3.3 The importance of active listening
- 3.4 The importance of special methods of communication
- 3.5 The importance of effective communication



LO2 – Factors Influencing Health

- 2.1 Factors influencing health and wellbeing
- 2.2 Leading a healthy lifestyle
- 2.3 Barriers to leading a healthy lifestyle

REVISION

VERBAL COMMUNICATION



Autumn Term

RO35 – Health Promotion Campaigns

Coursework – This is the 2nd written piece of coursework looking at creating and promoting a health promotion campaign.

LO1 – Current Public Health Issues and the Impact on Society

- 1.1 The importance of a healthy society
- 1.2 Public health challenges for society
- 1.3 Current health promotion campaigns and their benefits



Year 11

Your CNAT H&SC Journey continues here...